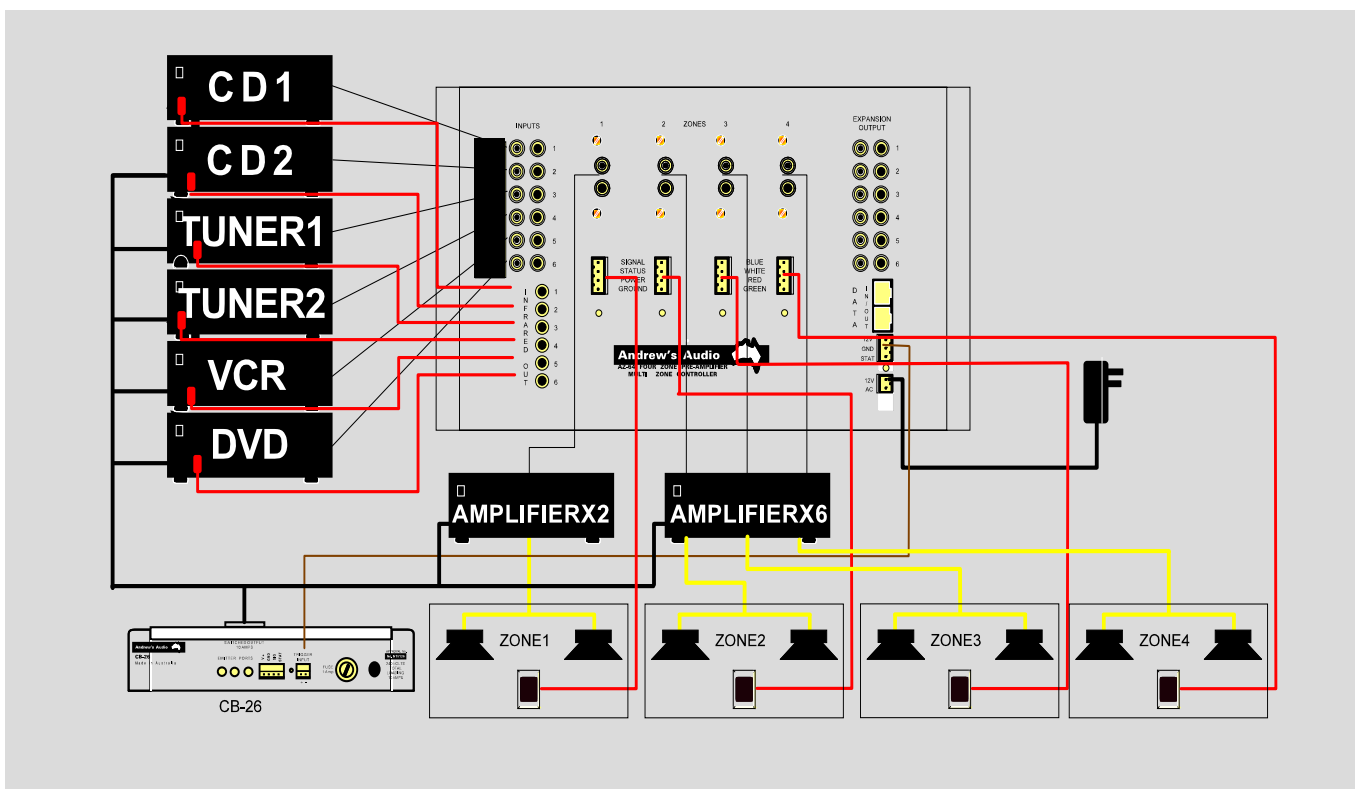




## Flexibility, simplicity of operation and ease of service

In multi-room systems the ability to select individual input sources is a basic requirement. While installers primarily seek flexibility in systems affording this ability, users want simplicity of operation and ease of service. The AZ series can now provide system designers with the full flexibility and quality required for large installations while also offering Andrew's Audio signature ease of installation and simplicity of operation. They have six inputs, each with individual level adjustment. The smart infrared routing system allows multiple CDs and tuners to be used by individual zones without conflict to the IR codes. There are four or six zone outputs, each with individual output control and an expansion port allowing for additional zones and/or output to a home theatre system. An Andrew's Audio RC-6 learning remote control is provided for each zone encoded with AZ-64 and AZ-66 commands and includes abilities such as zone off and all off. The AZ series requires no expensive external coding, it can be adjusted with a screwdriver. Its simplicity greatly enhances its reliability and flexibility, and the RC-6 learning remote control handsets won't lose their commands if the batteries run flat.



**Installation:** The Andrew's Audio AZ series has been designed to be mounted in the rear of an equipment cabinet behind the audio source components. Mounting brackets have been provided for ease of installation. Although the AZ-64/66 will remain relatively cool during normal operation, some allowance should be made for ventilation. Once mounted and setup there should be no further need to directly access the AZ-64/66.

**Audio:** The six source inputs (left and right) are located on the left-hand side of the unit. A stereo RCA lead should be used to connect the line output of each source component to one of these inputs. In the centre of the case are the four zone outputs. Each of these should be connected to the corresponding zone amplifier. Each zone amplifier would in turn be connected to the speakers in that zone using Andrew's Audio SP-450 "Low Loss" installation cable.

**Infrared:** Each zone will require at least one Andrew's Audio IR receiver to operate the AZ-64. Depending on the model chosen, the IR receiver should be located where it is easily activated by the remote control handset. Connect each receiver using the following colour code: Blue - Signal, White - Status, Red - Power, Green - Ground.

**Expansion:** If more zones are required then two or more AZ-64's or 66's can be linked together to achieve the number of zones required. Each link will require six pairs of RCA audio interconnects and one Cat-5 patchcord terminated with RJ-45 connectors. All control data between the multiple units is conveyed by the Cat-5 patchcord including IR signals for the source components. The IR emitters and the "Status" output should always be connected to the first AZ-64 only.