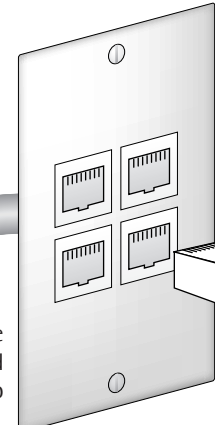
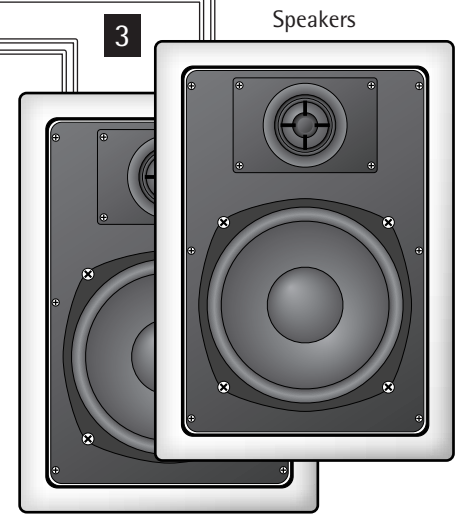
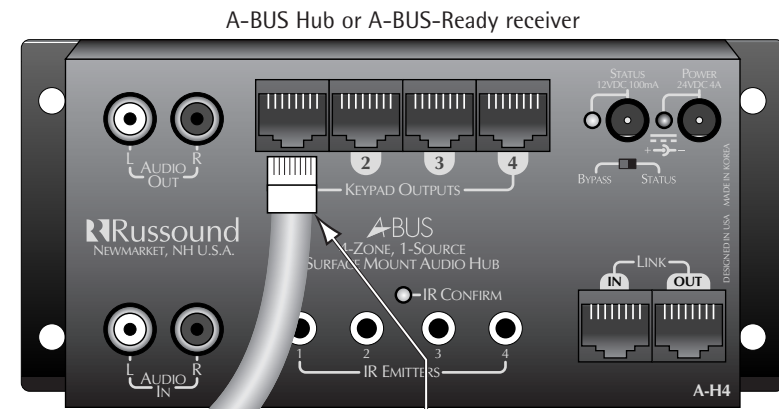
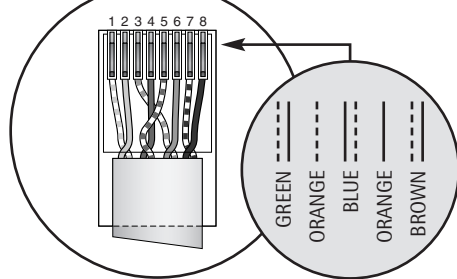
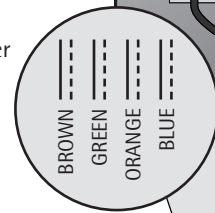
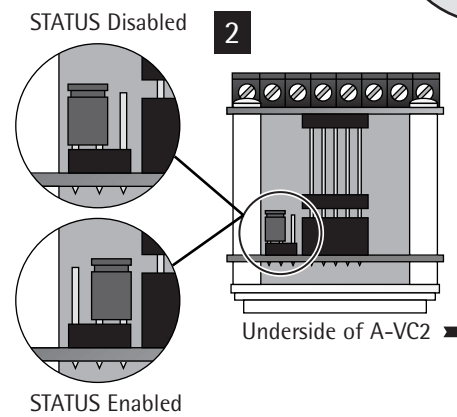
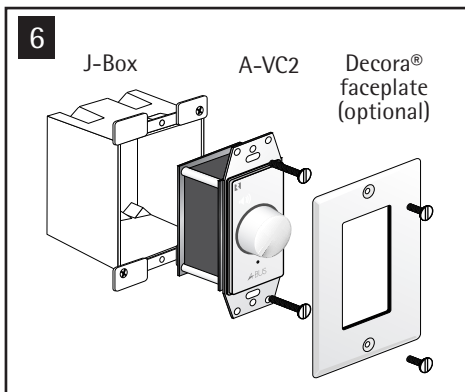
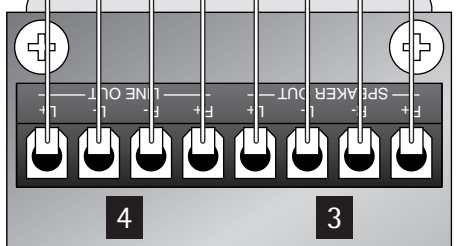
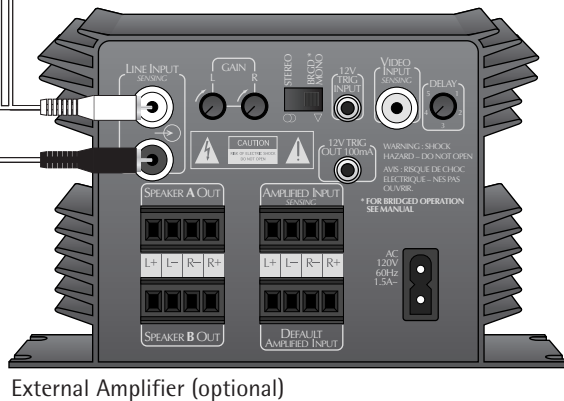
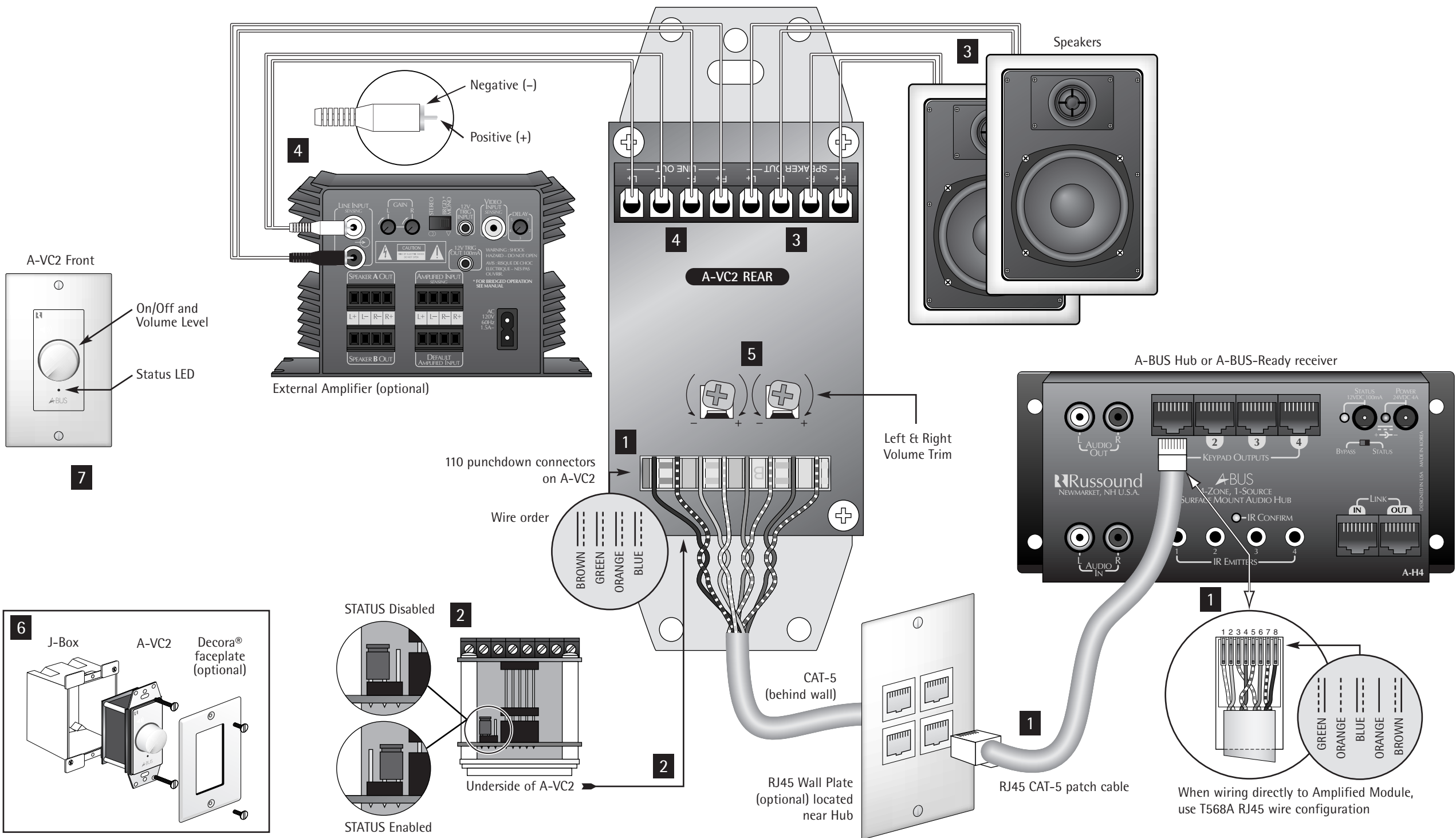


CONNECTION DIAGRAMS FOR RUSSOUND MODEL A-VC2. REFER TO THE INSTRUCTIONS ON BACK. *DIAGRAMS ARE NOT TO SCALE.*



When wiring directly to Amplified Module, use T568A RJ45 wire configuration

## INSTALLATION NOTES

- Before connecting the A-VC2:
  - Make sure that the A-PS power supply is not connected to the A-BUS Hub or, if you are using an A-BUS-Ready receiver, that the receiver is off.
  - Make sure that the STATUS input on the A-BUS Hub is not connected.
- The recommended maximum length for use with standard CAT-5 cable is 250 feet.
- Once all of the connections have been made, the A-PS power supply can be connected to the A-BUS Hub or, if you are using an A-BUS-Ready receiver, the receiver may be turned on.
- Make any Volume Trim adjustments on the A-VC2 before installing it into the wall.

## 1 CAT-5 CONNECTIONS

A CAT-5 cable is used to connect the A-VC2 to a keypad output on an A-BUS Hub or A-BUS-Ready receiver. For clean installations, use RJ45 CAT-5 patch cables to connect from the Hub to an RJ45 Wall Plate (optional), and then wire from the Wall Plate to the Amplified Module (see diagram). The Amplified Control Modules have 110 punchdown connectors for the 8 individual conductors of the CAT-5 cable (use a punchdown tool with a 110 blade to insert conductors).

**NOTE:** When wiring directly to an Amplified Control Module (i.e., not using an RJ45 Wall Plate) use T568A RJ45 wire configuration for connection to the hub.

## 2 STATUS

The STATUS jumper is located on the underside of the A-VC2. All A-BUS components are shipped with the STATUS feature disabled. If you intend to use the STATUS feature with your A-BUS system, you must enable the STATUS jumper on every Amplified Control Module as well as on the A-BUS Hub.

## 3 SPEAKER CONNECTIONS

Connect speaker wires to the speaker output terminals on the A-VC2 as shown in the diagram.

## 4 EXTERNAL AMPLIFIER (OPTIONAL)

An external amplifier can be connected to the LINE OUT of the A-VC2 to provide more power in a large listening area, such as an outdoor patio. The LINE OUT can also be used to feed a powered subwoofer for extended bass response.

## 5 VOLUME TRIM

Two rotary trim potentiometers are located on the back of the A-VC2. These can be used to set the maximum allowable volume level and to adjust left/right balance. Use a Philips-head screwdriver.

## 6 MOUNTING

Check all connections and test the system's operation before installing the A-VC2 into the wall. Using the included hardware, install the A-VC2 into a standard UL/CSA approved electrical J-Box as shown.

## 7 OPERATION

- Rotate the knob to switch the A-VC2 on and off and to adjust the volume level.
- If you are using the STATUS feature in your A-BUS system, the LED indicator on the A-VC2 will illuminate green when your source equipment is on, even when the A-VC2 is off.

# A-BUS<sup>™</sup>

## Model A-VC2

### Amplified Volume Control Module for A-BUS<sup>®</sup> System

#### Instruction Manual

### A-BUS SYSTEM OVERVIEW

The product you have just purchased is an integral part of the Russound A-BUS Multi-Room Audio System. It is a component which, when combined with other essential components and your source equipment (receiver, CD player, etc.), creates a versatile whole-house audio system that will fill your rooms with high-quality sound for years to come.

A-BUS technology is a new, innovative method of providing high quality audio to remote locations with a single 8-conductor cable such as CAT-5. A-BUS technology provides many advantages over other methods of audio distribution, including: simple, single CAT-5 wiring scheme; infrared control of system components; infrared control of the optional A-KP2 amplified keypad module; and system power status.

Every A-BUS System is comprised of components from each of the following three areas.

1. **A-BUS Amplified Control Modules:** The Module contains both the amplifier for the room's speakers as well as the control for those speakers. One Module should be used for each room you choose to control. The Russound A-KP2 Amplified Keypad (with built-in IR receiver) and A-VC2 Amplified Volume Control are examples of A-BUS Amplified Control Modules.
2. **A-BUS Hubs:** All components of the A-BUS system must be wired centrally to a Hub located near your source equipment. The Hub provides the connection for source equipment, volume controls, infrared emitters and power supply. The A-H484, A-H4, A-H4D, and A-H2 are examples of A-BUS Hubs. The A-H484, A-H4, and A-H2 are surface-mount units. The A-H4D is an in-wall Decora<sup>®</sup> style unit.
3. **Power Supply:** The power supply plugs into the Hub. The Russound A-PS 24VDC/2.5A unit is an example.

A-BUS<sup>®</sup> is a registered trademark of LeisureTech Electronics Pty Ltd Australia

Decora<sup>®</sup> is a trademark of Leviton Corporation

# Russound<sup>™</sup>

5 Forbes Rd. Newmarket, NH 03857, USA  
 ☎ 603.659.5170 • Fax 603.659.5388  
 e-mail: tech@russound.com

### A-VC2 OVERVIEW

The A-VC2 is an in-wall, A-BUS Amplified Control Module with a rotary control for speaker volume level and power on/off. The A-VC2 connects to A-BUS Hubs or A-BUS-Ready receivers using CAT-5 wiring, and to loudspeakers using conventional speaker wire.

**IMPORTANT** – Before installation, review the manuals included with each component in your system. If you are unsure of any of the installation procedures described herein or elsewhere, consult a professional electronics installer.

### A-VC2 FEATURES

- 1) Power On/Off
- 2) Volume Level
- 3) LED indicator for source component on/off status
- 4) Volume Trims for setting max. allowable level and L/R balance
- 5) Line Out for connecting to external amp or powered subwoofer
- 6) Matches Decora<sup>®</sup> faceplate (not included)

### A-VC2 SPECIFICATIONS

<b>Input Impedance:</b>	28k Ohm min., line input
<b>Power Requirements:</b>	+24VDC, 750mA
<b>Status Input Req.s:</b>	+12VDC, 20mA
<b>CAT-5 Connection:</b>	110 Punchdown
<b>Dimensions (in-wall):</b>	1.75"W x 2.875"H x 1.75"D (45x73x45mm)
<b>Weight:</b>	6 oz. (170g)



### LIMITED WARRANTY

The Russound A-VC2 is fully guaranteed for Two (2) years from the date of purchase against all defects in materials and workmanship. During this period Russound will replace any defective parts and correct any defect in workmanship without charge for either parts or labor. For this warranty to apply, the unit must be installed and used according to its written instructions. If service is necessary, it must be performed by Russound. The unit must be returned to Russound at the owner's expense and with prior written permission. Accidental damage and shipping damage are not considered defects under the terms of the warranty. Russound assumes no responsibility for defects resulting from abuse or servicing performed by an agency or person not specifically authorized in writing by Russound. Damage to or destruction of components due to improper use voids the warranty. In these cases the repair will be made at the owner's expense. To return for repairs, the unit must be shipped to Russound at the owner's expense, along with a note explaining the nature of the service required. Be sure to pack in a corrugated container with at least 3 inches of resilient material to protect the unit from damage in transit. Russound sells products only through authorized dealers and distributors to ensure that customers obtain proper support and service. Any Russound product purchased from an unauthorized dealer or other source, including retailers, mail order sellers and online sellers will not be honored or serviced under existing Russound warranty policy. Any sale of products by an unauthorized source or other manner not authorized by Russound shall void the warranty on the applicable product.